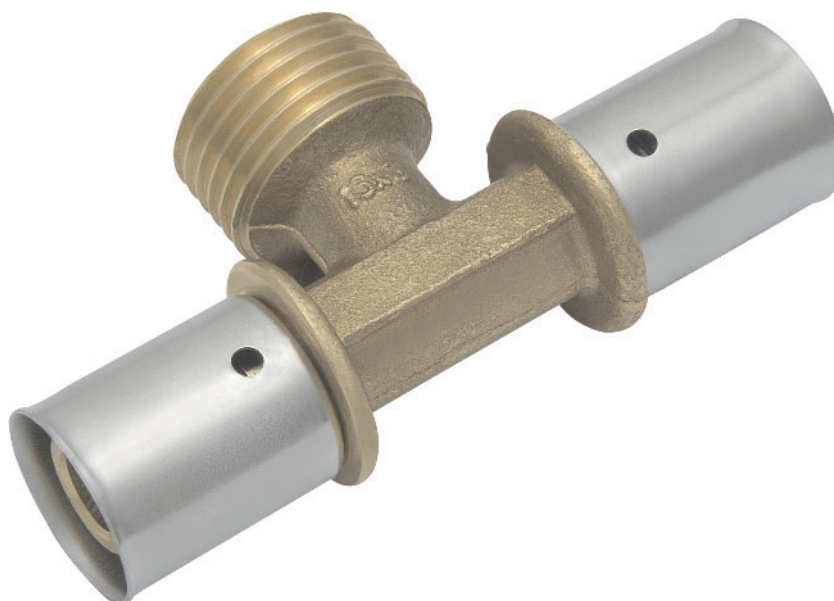




SYSTEM
KAN-therm

SYSTEM **KAN-therm** - PRODUCT CARD

SYSTEM **KAN-therm** Press Press male branch tee with steel sleeve



Description of the product:

Press male branch tee enables execution of screwed connection, mostly of a branch of main vertical pipeline. Screwed connection can be executed in Systems **KAN-therm** PRESS or PUSH by appropriate female connector or adapter (possible usage of nipple). Tee has male cylindrical thread – don't join it with conical threads. Connection should be sealed by tow with sealing compound.

Code:	K-903000; K-903001; K-903002; 9050.110; 9063.110; Reducer: 9050.120; 9063.120
Catalogue net price:	According to SYSTEM KAN-therm catalogue
Date of introduction:	January 2008
Dimension:	16x2/G1/2"/16x2; 20x2/G3/4"/20x2; 25x2,5/G1"/25x2,5; 50x4/G1"/50x4; 63x4,5/G1"/63x4,5; Reducer: 50x4/G1"/40x3,5; 63x4,5/G1"/50x4
Qty. bag/box	0-10/5-80

KAN Sp. z o.o.

Zdrojowa 51 Str., 16-001 Białystok-Kleosin, tel. 0048 85 7499-200, fax. 0048 85 7499-201, e-mail: sales@kan.com.pl
branches: Gdynia, Tychy, Warszawa, Poznań, Moskwa, Kijów, Mińsk, Troisdorf-Spich www.kan.com.pl