

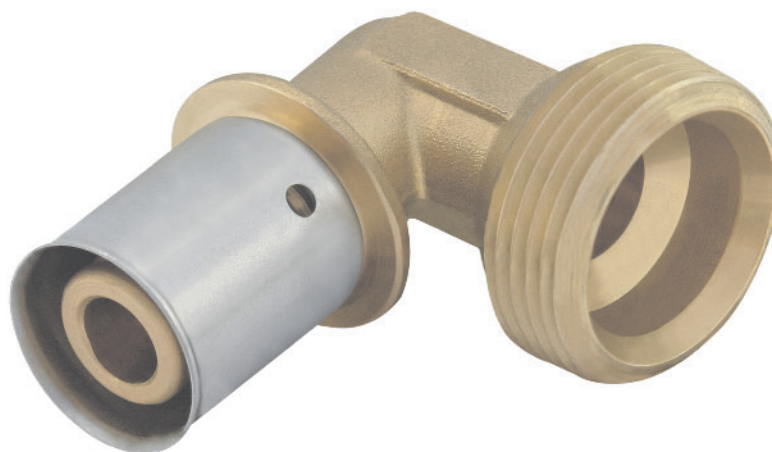


SYSTEM  
KAN-therm

## SYSTEM **KAN-therm** - PRODUCT CARD

### SYSTEM **KAN-therm** Press

Press male branch 90° elbow  
with steel sleeve



**Description of the product:**

Press male branch 90° elbow with steel sleeve is used in connections with female fittings and connectors. Screwed connection should be sealed by tow with sealing compound.

Code:	<b>K-901000; K-901001; K-901002</b>
Catalogue net price:	<b>According to SYSTEM <b>KAN-therm</b> catalogue</b>
Date of introduction:	<b>January 2008</b>
Dimension:	<b>16x2 G1/2"; 20x2 G3/4"; 25x2,5 G1"</b>
Qty. bag/box	<b>5-10/50-150</b>

**KAN** Sp. z o.o.

Zdrojowa 51 Str., 16-001 Białystok-Kleosin, tel. 0048 85 7499-200, fax. 0048 85 7499-201, e-mail: sales@kan.com.pl  
branches: Gdynia, Tychy, Warszawa, Poznań, Moskwa, Kijów, Mińsk, Troisdorf-Spich [www.kan.com.pl](http://www.kan.com.pl)